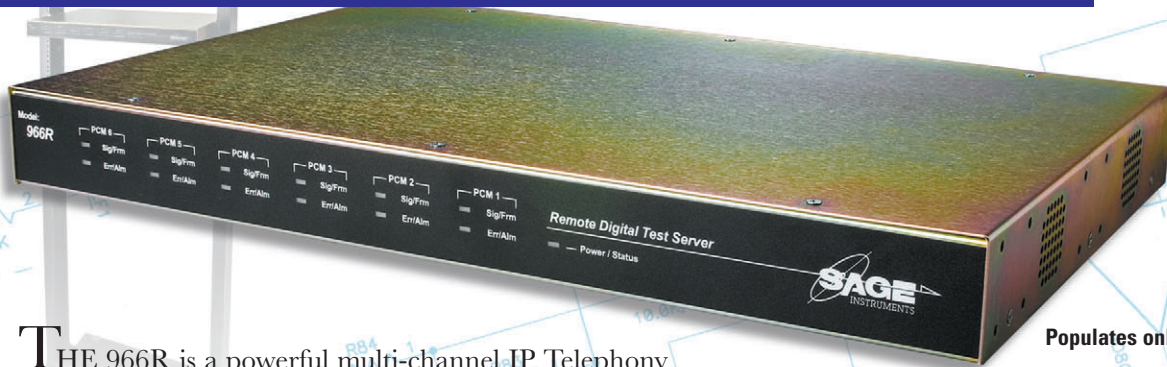


MAKING
COMMUNICATIONS
BETTER

966R

NEXT GENERATION MULTI-CHANNEL TEST SERVER

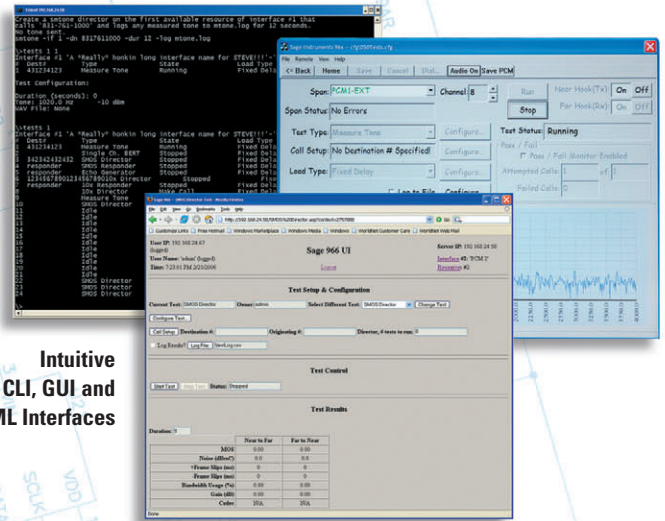


Populates only one RU

THE 966R is a powerful multi-channel IP Telephony test server designed to provide service providers and manufacturers a robust test platform to remotely monitor, turn-up, and maintain voice, fax and data services.

In today's environment, test tools need to be cost-effective in both form and function. And with its broad range of instrument quality test features and its ability to be configured as a single or multi-user platform, the 966R can be shared to meet a variety of requirements in a Next Generation environment.

- Field Certification and Deployment Testing
- Voice Quality Testing
- Tier III Fault Isolation
- Proactive Quality Assurance Testing
- Proactive IMT Testing (ROTL)



Intuitive
CLI, GUI and
HTML Interfaces

966R FEATURES A POWERFUL NEXT GENERATION TEST SUITE

CAPABILITIES

Proactive Testing

- GR-822 ROTL Testing
- Distributed Probe Testing
- Dynamic Test Line Allocation

Passive Monitoring

- SIP Call Monitor
- RTP decode and Monitor
- RTCP decode and Monitor
- Echo Level & Delay
- PRI-ISDN Call Monitor
- T-38 FaxRelay
- RFC 2833 Monitor

Voice Quality & Telephony Transparency

- ITU-G.107 E-model

- ITU-P.50 Artificial Voice
- Mean Opinion Score (MOS)
- Delay Performance
- Comfort Noise Level (CNG)
- Audio Level (Gain/Attenuation)
- Jitter Buffer VAD Performance
- Packet/Frame Loss (% Average burst length)
- DTMF/MF Verification
- Fax Transparency
- V.xx Modem Transparency
- RTP Traffic Generation
- Call Loading

Echo Cancellation Performance

- Multi-Echo Detection
- Echo Level, Echo Delay
- Echo Canceller Disabler Tone(s)

- Dispersive Echo Emulation
- Echo Cancellation Convergence Testing
- Passive Echo Monitor

Digital Facility Turn-up & Validation

- Multi-Channel BERT and Fractional E1/T1

Test Interfaces and Throughput

- Up to Six Interfaces
- T1/E1 – 186 Simultaneous Tests
- Modes: Term, Mon, and Drop and Insert
- 10/100BT – 384 Simultaneous Tests

Call Setup Signaling

- CAS
- PRI-ISDN
- SIP

Sage Instruments
240 Airport Boulevard
Freedom CA 95019-2614

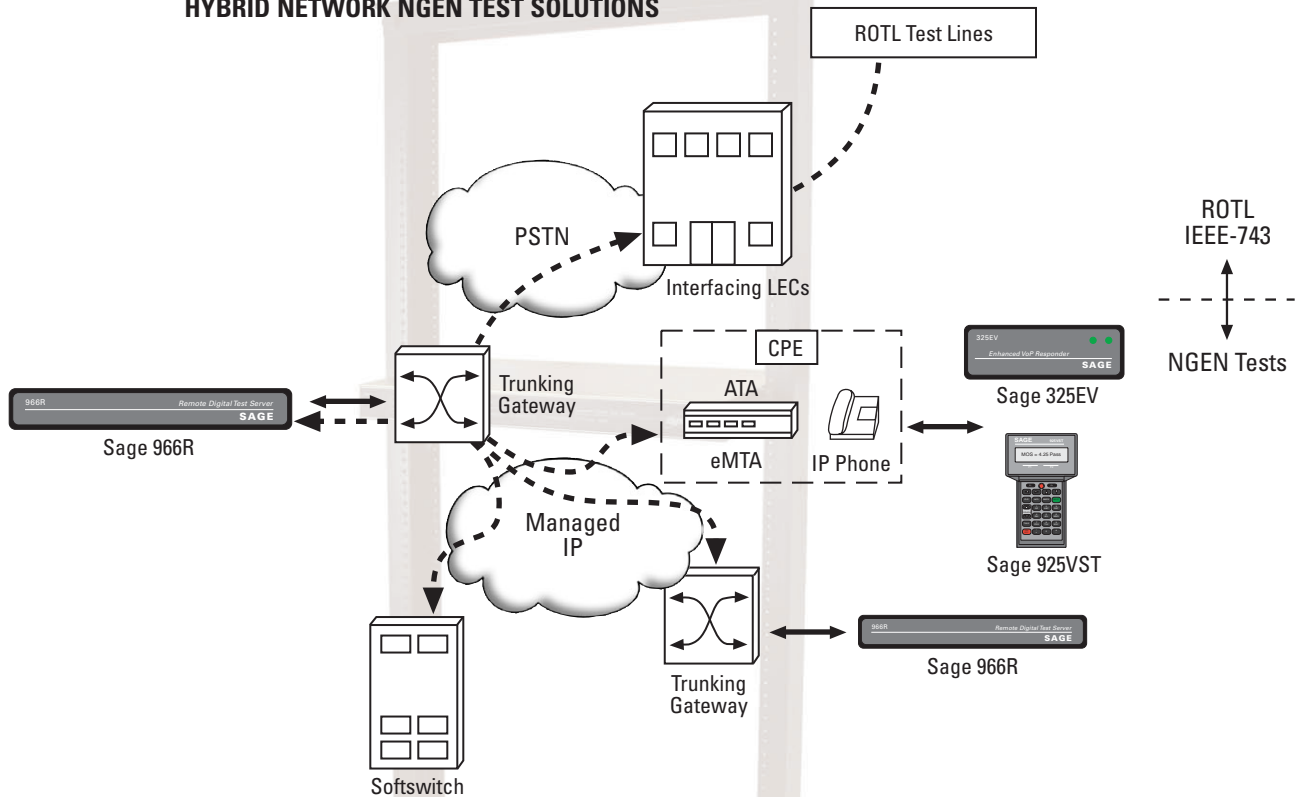
PHONE 831.761.1000
FAX 831.761.1008
WEB www.sageinst.com



966R

NEXT GENERATION MULTI-CHANNEL TEST SERVER

HYBRID NETWORK NGEN TEST SOLUTIONS



PHYSICAL CHARACTERISTICS

- Test Interface: 2-6 T1/E1 Ports [RJ-45, Balanced 100/120 ohms]
Test Interface: 2-6 10/100 Ethernet
- Com Port: 1 USB (Series B), LAN 10/100
- Power: -48VDC; 120/240VAC
- Size: 1-RU, 17"x 11"x 1.75", max wt. 10 lbs.
- Certs: UL, CE, NEBSL3, OpTmp 0-40°C

STANDARD FEATURES

- Multi-User CLI, HTML UI, and PC Client GUI
- Send/Measure Tone

966R OPTIONS

- 7966-0000-01 966 Base Unit Chassis
- 7966-0001-01 110-220V AC Power Entry
- 7966-0002-01 -48V DC Power Entry
- 7966-0100-01 Dual E1/T1
- 7966-0300-01 Dual Ethernet (10/100 Base T)
- 7966-1000-01 PRI-ISDN – PRI-ISDN Call Setup
- 7966-5000-01 ITU G.107 E-Model
- 7966-5100-01 Digit Analyzer
- 7966-5200-01 ROTL 100, 102 & 105
- 7966-5300-01 MoIP – Modem IP Transparency Test
- 7966-5400-01 BERT - DSO, DS1 FT1 and FE1 (Nx64)
- 7966-5500-01 NGEN Tests [SMOS, PVIT, Echo Sounder, Echo Generator]

- 7966-5700-01 ITU P.561 Passive Echo Monitor
- 7966-5800-01 Fax - T.30 Transmit & Receive
- 7966-6110-01 SIP Protocol Mon/Decode
- 7966-6120-01 SIP Call Setup
- 7966-6130-01 RTP Mon & Decode
- 7966-6140-01 RTCP Mon & Decode

For the most current information please visit www.sageinst.com